



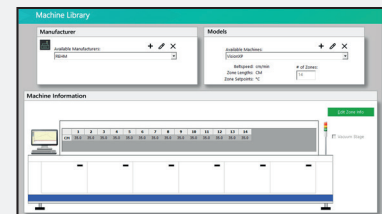
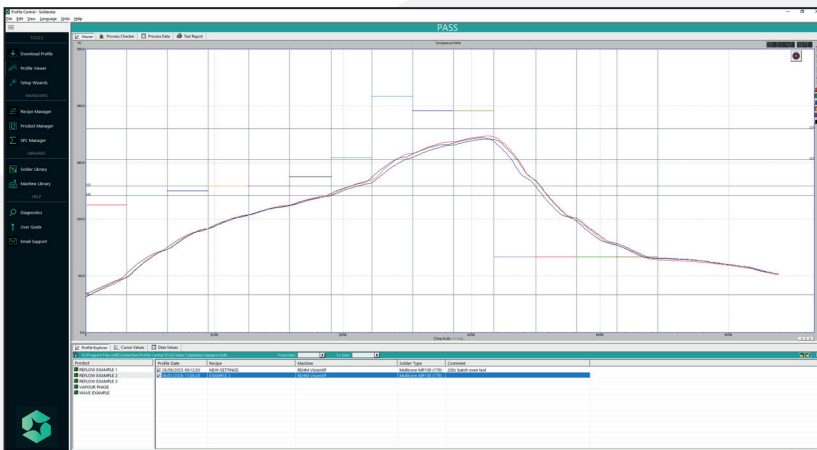
- ◆ 9 measurement channels
- ◆ +/- 0.5C Accuracy
- ◆ Standard type-K inputs
- ◆ User replaceable safe NiMH battery
- ◆ 12 profile memories
- ◆ High thermal protection
- ◆ Compact datalogger + thermal shield
- ◆ High speed USB or 2.4Ghz Wireless
- ◆ Automatic sensor detection/testing

Compact Reflow Profiler with 9 measurement channels

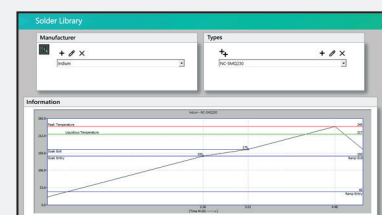
The package includes an ultra-compact datalogger featuring the unique 'SmartLink' connector system, combined with a heatshield and thermocouple adapter to provide nine measurement channels.

Developed for advanced and thermally demanding PCB assemblies, the 9-channel system delivers increased profiling capability for complex, high-density and multi-layer boards, enabling more detailed thermal analysis across critical components and locations. Despite the increased channel count, the system maintains the same compact width and proven form factor as the standard platform, allowing easy integration into production environments with tight process clearances.

A comprehensive software suite includes profile analysis, data management, profile simulation and integrated SPC charting tools. Powerful yet easy to use, the system is ideal for electronics manufacturers and EMS providers requiring enhanced thermal visibility, rapid profile setup and ongoing process verification for today's increasingly sophisticated PCB technologies.



Data libraries for ovens and solder paste specifications



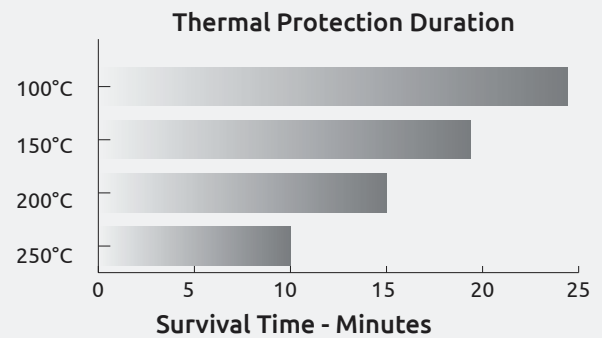
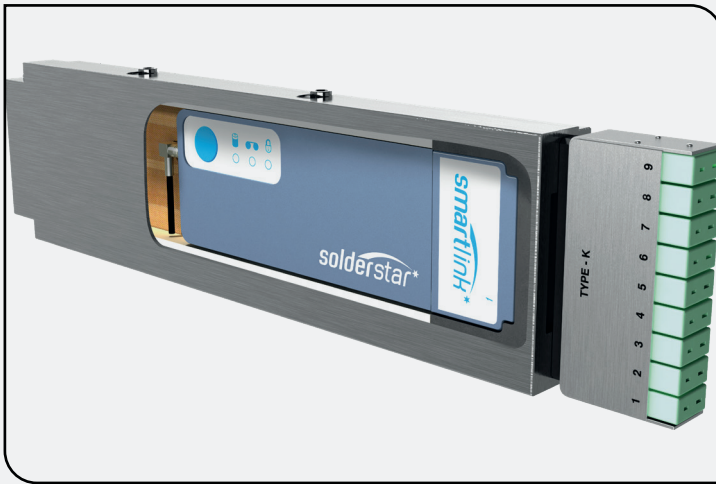
Powerful analysis and profile simulation tools

SLX Datalogger Technical Specification

Size/Weight	126mm x 52mm x 9.5mm, 118g
Channels	Support for upto 12 - Type K
Temperature Memory	12 Memories, each with 25000 data points per measurement channel
Measurement Rate	0.05s to 60 seconds
Measurement Range	-125 to 1372°C (-257 to 2502 °F)
Measurement Accuracy	±0.5 °C (0.9°F)
Measurement Resolution	±0.05 °C (0.09°F)
Max. Internal Temperature	+85 °C (Auto Shutdown on over temp.)
Power	User replaceable, High Temperature NiMH
Communications	USB or optional 2.4Ghz Wireless
Input Type	Type K, EN 05842:1993, Class 1 / ANSI MC 96.1



Heatshield Technical Specification



Supplied Model	HS-SL2580-SL9
Material	Stainless Steel construction
Sensors	9 x Type-K standard socket inputs
Shield Size (L x W x H)	310mm x 80mm x 25mm

Wireless Telemetry Option

Frequency
2.4 Ghz Transceiver

Channels
128 Individual Channels



Software

Compatibility
Windows 7/8/10/11

Language Support
English, French, German, Italian, Portuguese, Spanish & Chinese

For more information contact your regional Solderstar office



Solderstar Ltd
Unit C2 - Castle Park Industrial Estate
Bower Street, Oldham, OL1 3LN
United Kingdom
+44 (0)1706 354846
info@solderstar.co.uk



Solderstar Ltd
4600 140th Avenue North, Suite 180
Clearwater, Florida 33762-3814
United States
+1 (727) 461 2270
info@solderstar.com



Solderstar / PhoenixTM GmbH
Löhner Str. 108
Löhne, D-32584
Germany
+49 5731 3002811
info@solderstar.de