

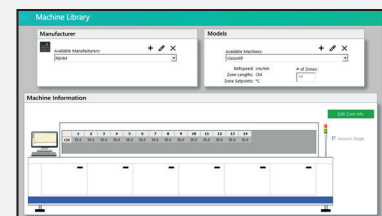
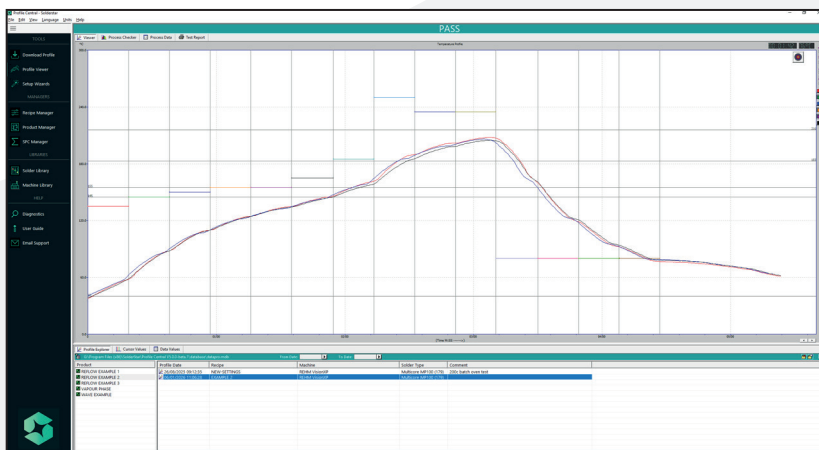
- ◆ 12 measurement channels
- ◆ +/- 0.5C Accuracy
- ◆ Standard type-K inputs
- ◆ User replaceable safe NiMH battery
- ◆ 12 profile memories
- ◆ High thermal protection
- ◆ Compact datalogger + thermal shield
- ◆ High speed USB or 2.4Ghz Wireless
- ◆ Automatic sensor detection/testing

## Advanced Reflow Profiler with 12 measurement channels

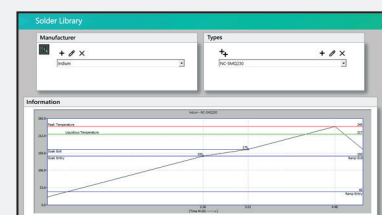
The package includes an ultra-compact datalogger featuring the unique 'SmartLink' connector system, combined with a heatshield and thermocouple adapter to provide twelve measurement channels.

Engineered for the most advanced electronic PCB assemblies, the 12-channel system delivers maximum profiling capability for highly complex, high-density and multi-layer products where extensive thermal monitoring is essential. Ideal for applications incorporating large BGAs, CSPs, PoP devices and other thermally sensitive components, the system enables multiple measurement points across critical areas of the assembly to ensure complete process visibility and accurate thermal characterisation.

The increased channel capacity allows simultaneous monitoring of component joints, board surfaces and shadowed areas where temperature variation can significantly impact solder quality and long-term reliability. Despite the enhanced measurement capability, the system maintains a compact and production-friendly form factor suitable for modern reflow processes.



## Data libraries for ovens and solder paste specifications



Powerful analysis and profile simulation tools

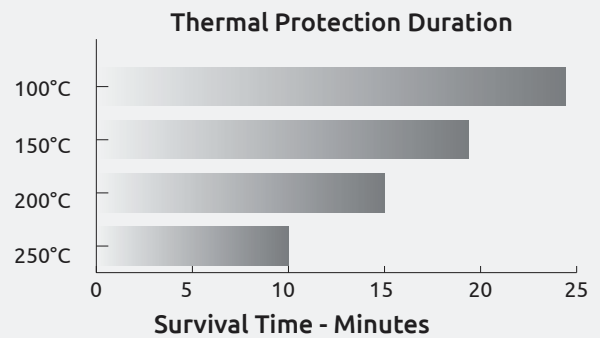
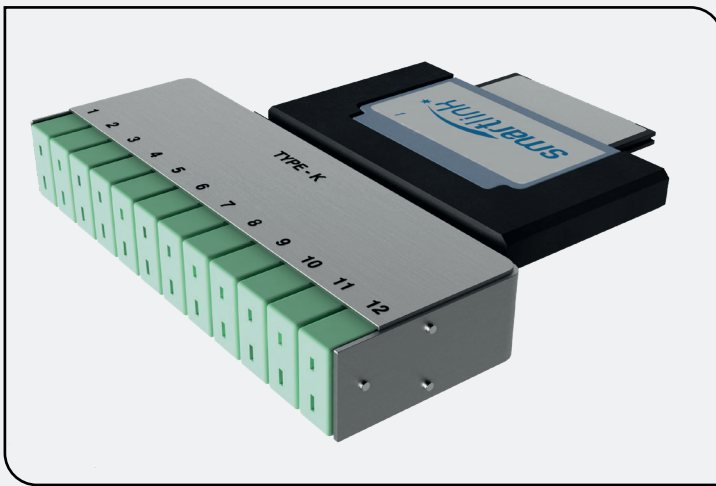
[www.solderstar.com](http://www.solderstar.com)

## SLX Datalogger Technical Specification

|                                  |  |
|----------------------------------|--|
| <b>Size/Weight</b>               | 126mm x 52mm x 9.5mm,118g  |
| <b>Channels</b>                  | Support for upto 12 - Type K                                     |
| <b>Temperature Memory</b>        | 12 Memories, each with 25000 data points per measurement channel |
| <b>Measurement Rate</b>          | 0.05s to 60 seconds  |
| <b>Measurement Range</b>         | -125 to 1372°C (-257 to 2502 °F)                                 |
| <b>Measurement Accuracy</b>      | ±0.5 °C (0.9°F)  |
| <b>Measurement Resolution</b>    | ±0.05 °C (0.09°F)  |
| <b>Max. Internal Temperature</b> | +85 °C (Auto Shutdown on over temp.)                             |
| <b>Power</b>                     | User replaceable,High Temperature NiMH                           |
| <b>Communications</b>            | USB or optional 2.4Ghz Wireless                                  |
| <b>Input Type</b>                | Type K, EN 05842:1993, Class 1 / ANSI MC 96.1                    |



## Heatshield Technical Specification



|                                |                                   |
|--------------------------------|-----------------------------------|
| <b>Supplied Model</b>          | HS-SL2580-SL12                    |
| <b>Material</b>                | Stainless Steel construction      |
| <b>Sensors</b>                 | 9 x Type-K standard socket inputs |
| <b>Shield Size (L x W x H)</b> | 310mm x 104mm x 25mm              |

## Wireless Telemetry Option

**Frequency**  
2.4 Ghz Transceiver

**Channels**  
128 Individual Channels



## Software

**Compatibility**  
Windows 7/8/10/11

**Language Support**  
English, French, German, Italian, Portuguese, Spanish & Chinese

## For more information contact your regional Solderstar office



Solderstar Ltd  
Unit C2 - Castle Park Industrial Estate  
Bower Street, Oldham , OL1 3LN  
United Kingdom  
+44 (0)1706 354846  
info@solderstar.co.uk



Solderstar Ltd  
4600 140th Avenue North, Suite 180  
Clearwater, Florida 33762-3814  
United States  
+ 1 (727) 461 2270  
info@solderstar.com



Solderstar / PhoenixTM GmbH  
Löhner Str. 108  
Löhne, D-32584  
Germany  
+49 5731 3002811  
info@solderstar.de